



Crown Street, Brentwood, CM14

BUTLER  STAG



Located in the heart of Brentwood High Street is this stunning ground floor one bedroom apartment with private allocated parking.



- Ground Floor One-Bedroom Apartment
- Private Entrance
- 0.3 Miles From Brentwood Station
- Open Plan Lounge/Kitchen Apartment
- Allocated Parking
- Close Walk To Brentwood High Street

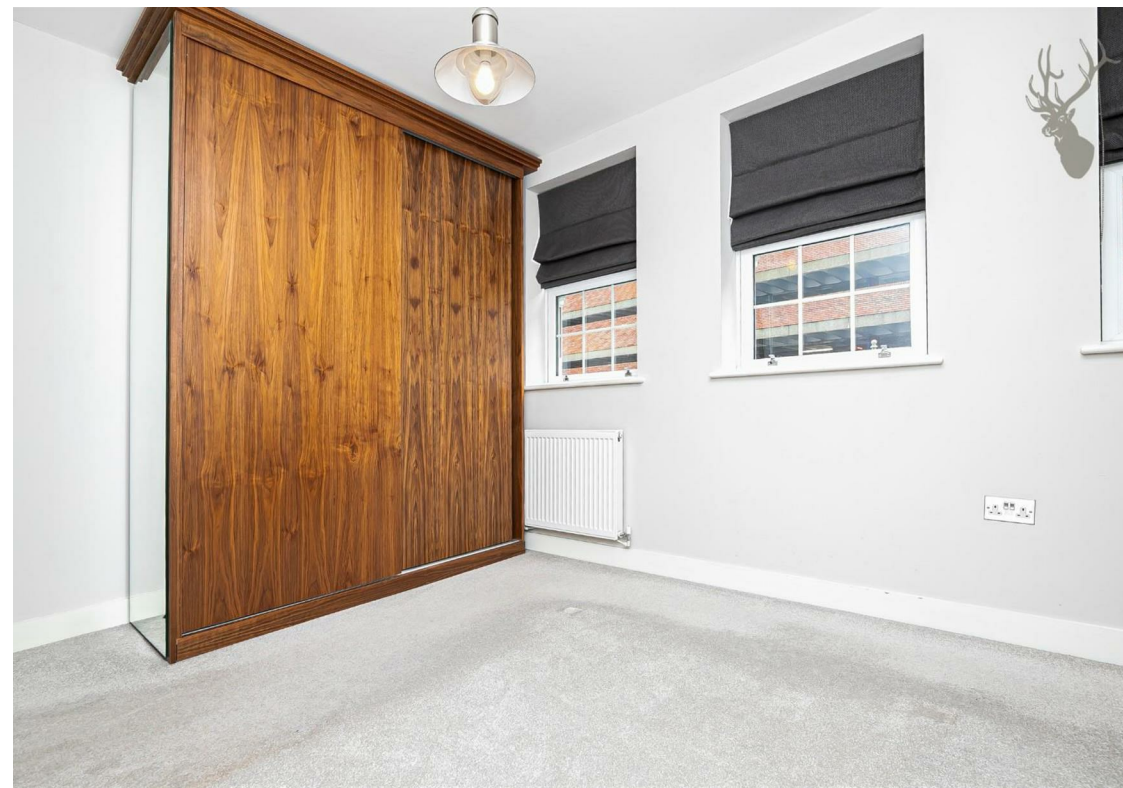
Finished to exacting standards throughout along side the development only three years from new, this one bedroom offers a vast amount of floor space throughout whilst being positioned within 100 yards from the High Street shops/restaurants.

Internally, the apartment benefits from a comprising open plan lounge/kitchen with Neff appliances and oak flooring running through the room. The bedroom has fitted cherry wood mirrored sliding wardrobes and matching drawers and is complete with a three piece suit bathroom.

Knight Court is also only a short walk from Brentwood station and with the Elizabeth Line, Brentwood station offers a direct 23-minute service to Central London, Heathrow and beyond. There is also fantastic links within a ten minutes commute by car to M25/A12.

Council Tax Band D

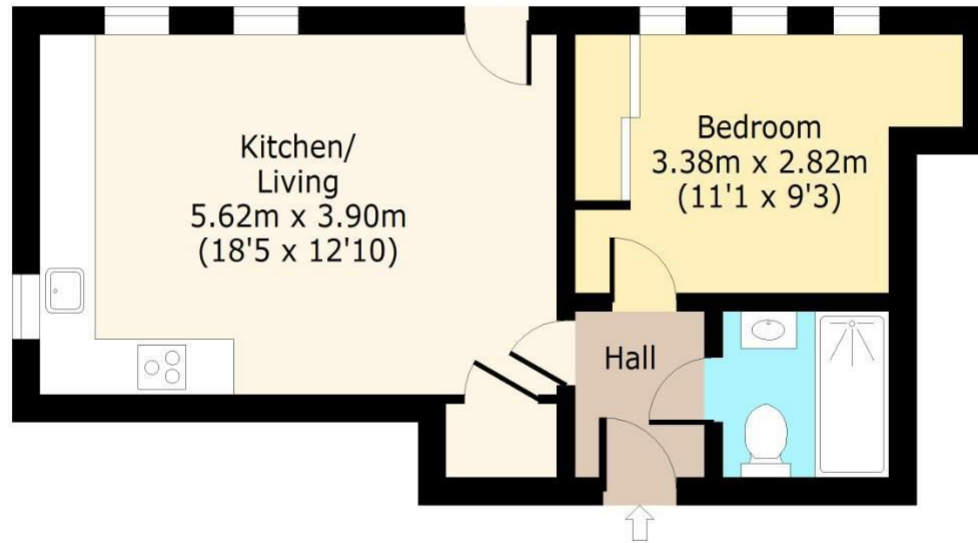




Knight Court

First Floor

Approx. 41 Sq. meters (441 Sq. feet)



Total area: approx. 41 Sq. meters (441 Sq. feet)

For illustration purposes only - not to scale

www.lpaplus.com

IMPORTANT NOTICE - These particulars have been prepared in good faith and they are not intended to constitute part of an offer or contract. We have not performed a structural survey on this property and the services, appliances and specific fittings have not been tested. All photographs, measurements, floor plans and distances referred to are given as a guide and should not be relied upon.

BUTLER & STAG

☎ 01992 667666

🏠 4 Forest Drive, Theydon Bois, Essex, CM16 7EY

✉ theydon@butlerandstag.com

www.butlerandstag.uk